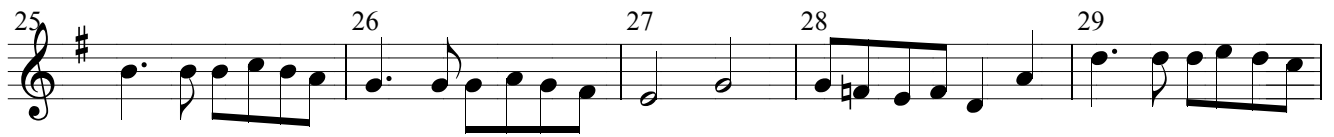


Canon

J. PACHELBEL



INS Joan Puig i Ferrerter.
Adelaida Ibañez

LA MÚSICA EN EL BARROCO.

1.- Lascia ch'io pianga. Aria de la ópera Rinaldo, de G. F. Haendel. (ABAACABAA).

A

2 3 4 5 6 7 8

B

1 2 3 4 5 6

Detailed description: This block contains two staves of musical notation for the aria 'Lascia ch'io pianga'. The first staff, labeled 'A', is in 3/4 time and contains measures 2 through 8. The second staff, labeled 'B', is in 3/4 time and contains measures 1 through 6. The notation includes various note values such as quarter, eighth, and sixteenth notes, along with rests and accidentals.

2.- Jesús, alegría de los hombres. Coral de la cantata 147, de J. S. Bach.

1 8 2 3 4 5 6 7 8 9 10

11 7 12 13 14 15 16 2 17 18 19 20

21 2 22 23 24 25 26 27 28 29 30

Detailed description: This block contains three staves of musical notation for the chorale 'Jesús, alegría de los hombres'. The first staff contains measures 1 through 10, the second staff contains measures 11 through 20, and the third staff contains measures 21 through 30. The notation is in 3/4 time and features a simple harmonic structure with quarter and eighth notes.

Si dulce é 'l tormento.

2 3 4 5 6 7 8 9 10

11 12 13 14 15 16 17 18 19 20 21 22

Detailed description: This block contains two staves of musical notation for the piece 'Si dulce é 'l tormento'. The first staff contains measures 2 through 10, and the second staff contains measures 11 through 22. The notation is in 3/8 time and consists of a single melodic line with eighth and sixteenth notes.

4.- Quiero quedarme junto a tí. Coral de la pasión según S. Mateo, de J. S. Bach.

1 2 3 4 5 6 7

1. 2.

Detailed description: This block contains the first staff of musical notation for the chorale 'Quiero quedarme junto a tí'. It is in 4/4 time and contains measures 1 through 7. The notation includes a repeat sign and two endings, labeled '1.' and '2.', which are indicated by brackets above the staff.

8 9 10 11 12 13 14 **DA CAPO.**

5.- SUJETO de Fuga. Concierto l'estro armónico, de A. Vivaldi. (original sol m).

1 2 3 4 5

6.- Allegro de la primavera, de A. Vivaldi. Ritornello A.

1 2 3 4 5 6 7 8

1. 2.

Ritornello B

1 2 3 4 5 6 7 8 9

1. 2.

Ritornello B en la tonalidad de la dominante.

1 2 3 4 5 6 7 8

Ritornello B en la tonalidad relativa menor.

1 2 3 4 5 6 7 8

Otro tema.

1 2 3 4 5 6 7 8 9 10